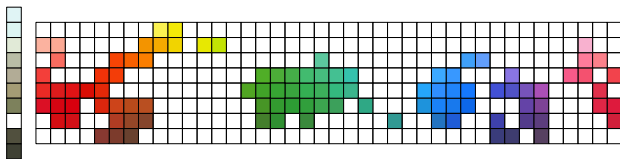


- distribution of focal colors:

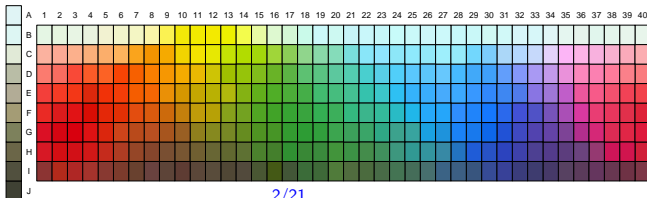
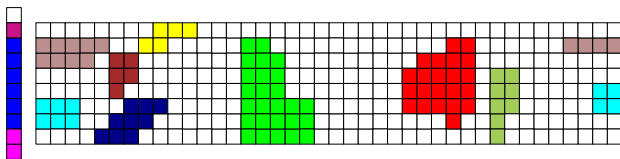


- essentially correspond to the centers of the English categories *black, white, red, green, yellow, blue, purple, orange, brown, grey, pink*

Berlin and Kay 1969

■ extensions

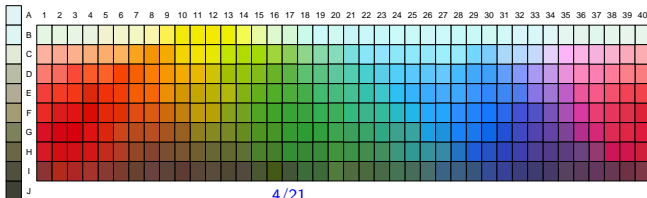
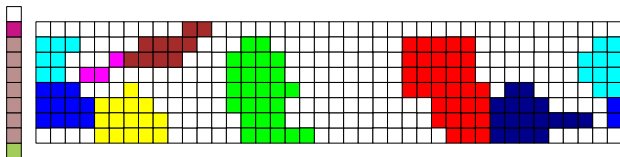
Arabic



Berlin and Kay 1969

■ extensions

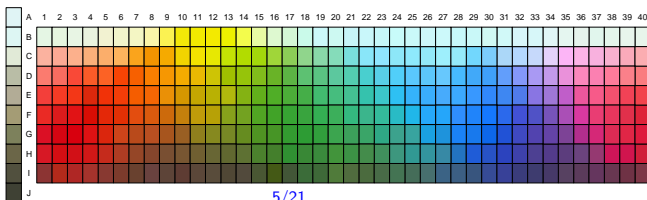
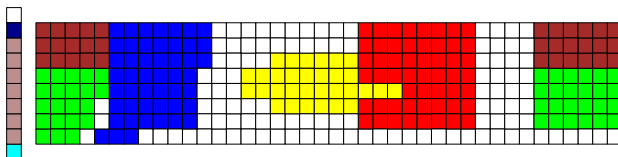
Bulgarian



Berlin and Kay 1969

■ extensions

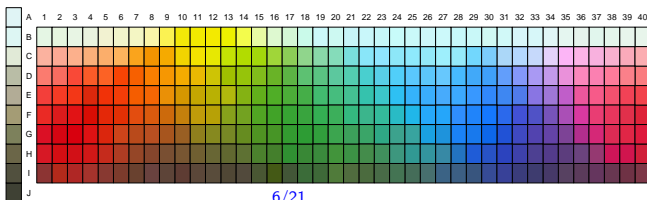
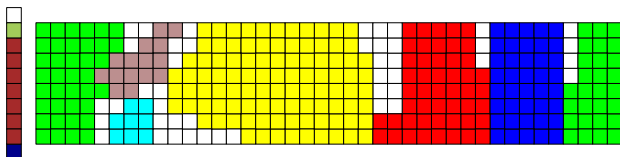
Cantonese



Berlin and Kay 1969

■ extensions

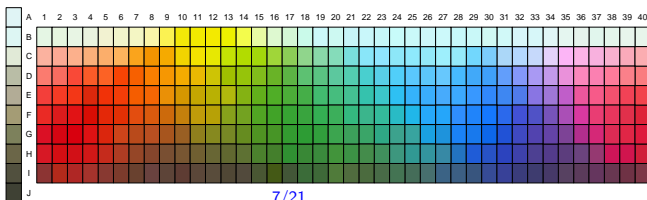
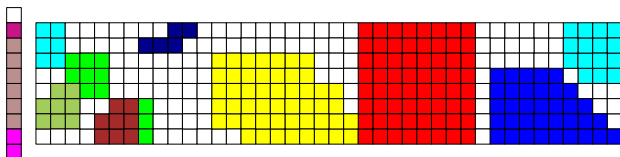
Catalan



Berlin and Kay 1969

■ extensions

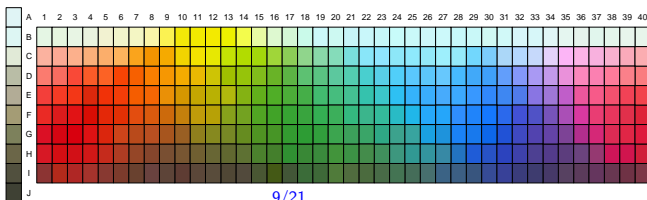
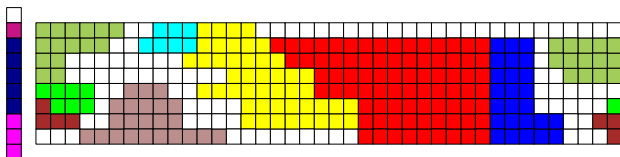
English



Berlin and Kay 1969

■ extensions

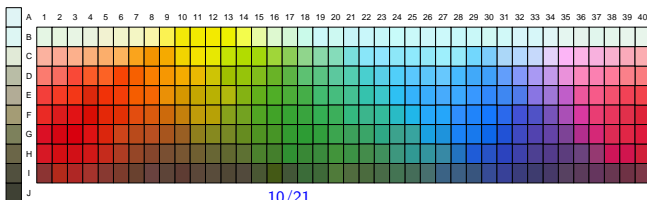
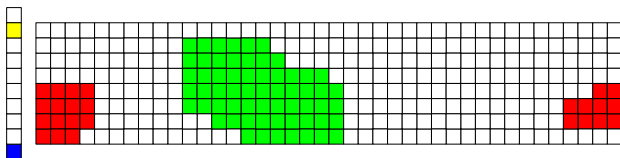
Hungarian



Berlin and Kay 1969

■ extensions

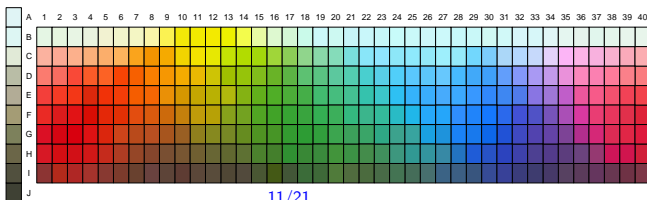
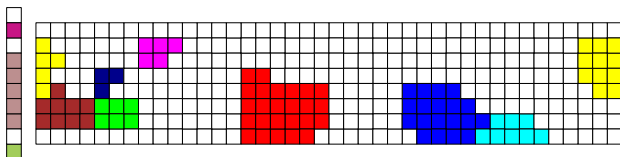
Ibibo



Berlin and Kay 1969

■ extensions

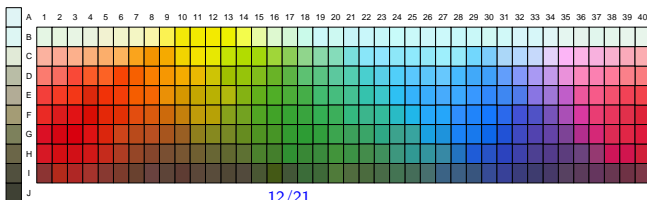
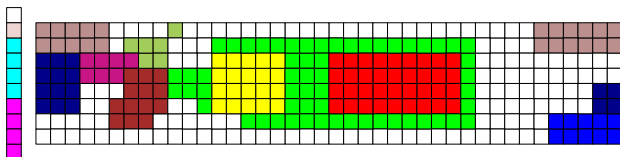
Japanese



Berlin and Kay 1969

■ extensions

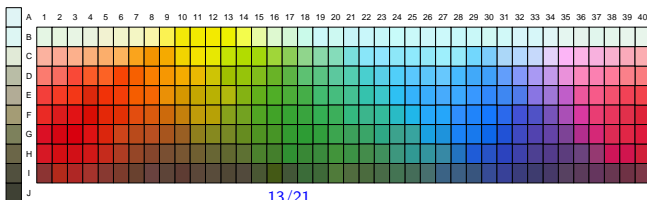
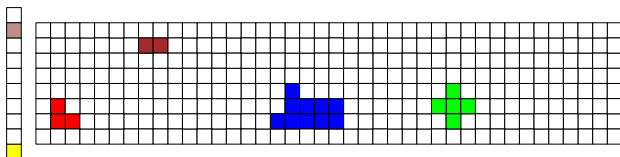
Korean



Berlin and Kay 1969

■ extensions

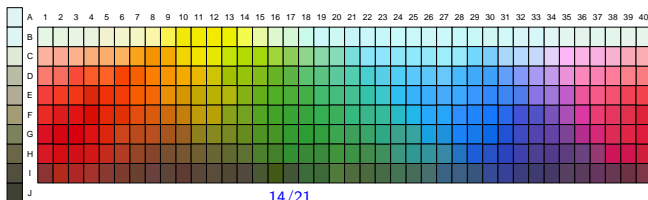
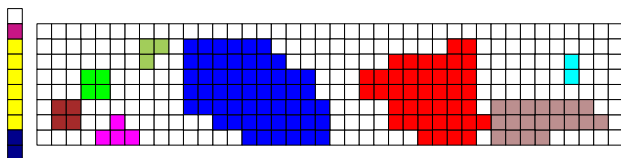
Mandarin



Berlin and Kay 1969

■ extensions

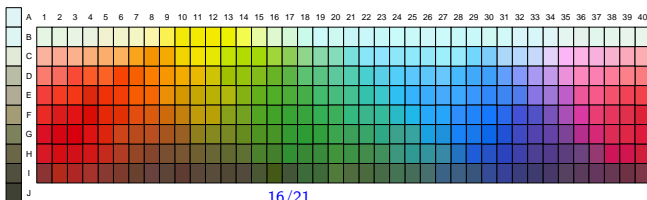
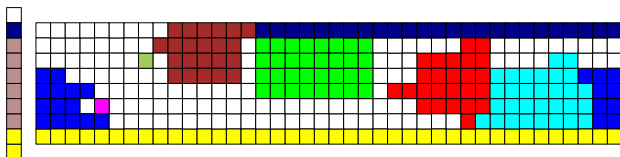
Mexican Spanish



Berlin and Kay 1969

■ extensions

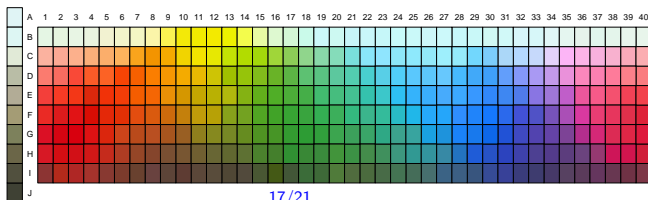
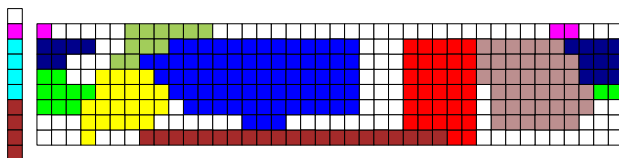
Swahili



Berlin and Kay 1969

■ extensions

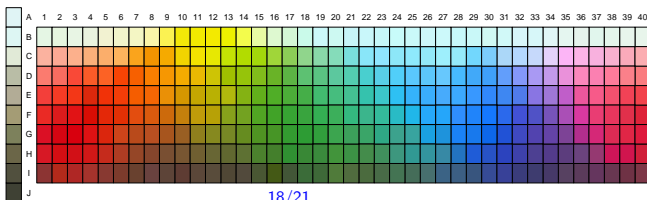
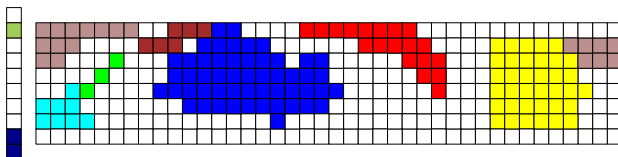
Tagalog



Berlin and Kay 1969

■ extensions

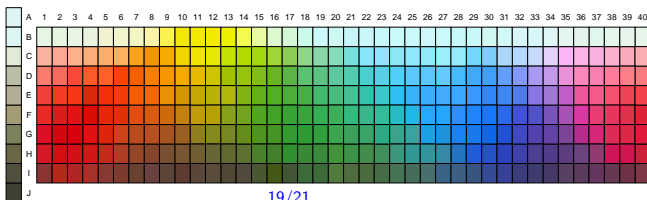
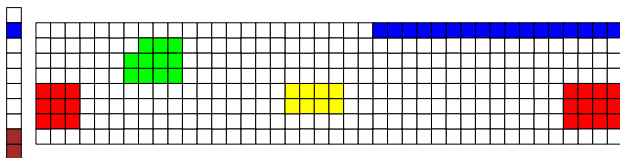
Thai



Berlin and Kay 1969

■ extensions

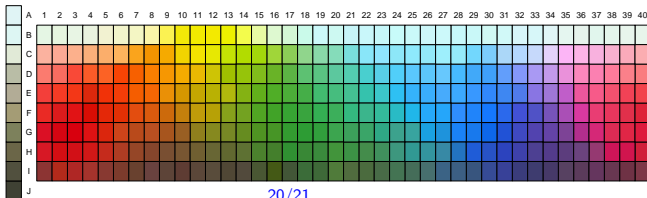
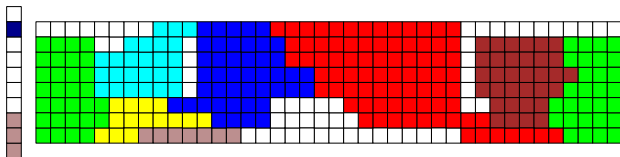
Tzeltal



Berlin and Kay 1969

■ extensions

Urdu



Berlin and Kay 1969

■ extensions

Vietnamese

